

MODEL: C2597

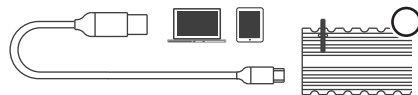
External M.2 NVMe SSD Enclosure

USB 3.1 Gen 2 Type-C To M.2 NVMe SSD

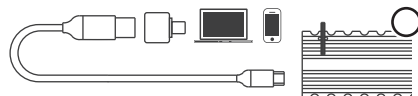
www.ineo-usa.com

Package Contents

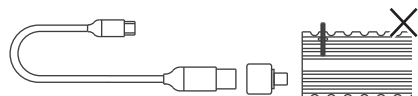
C2597	M.2 NVMe to USB 3.1 Gen 2
Type C to USB A cable	Yes
Type C Adapter	Yes
Silicon Thermal Pad	Yes
Heat Sink	Yes
Screw Kit	Screw Driver x 1, Screws x 2
Pull ring kit	Yes
Guarantee Card	Yes
User Manual	Yes

Connect properly

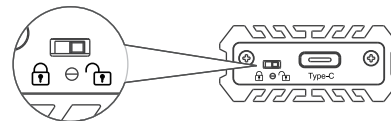
Plug-in the type C connector to 2597 enclosure and plug-in the Type A connector to computer.



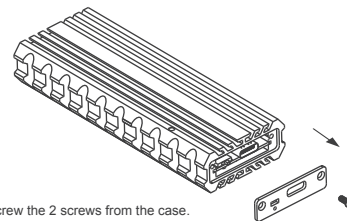
Plug-in the type C connector to 2597 enclosure and plug-in the Type A connector to converter first then computer.



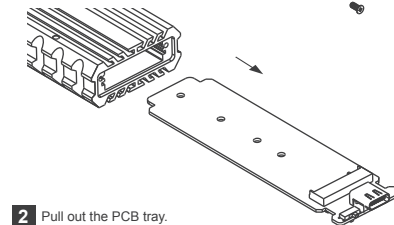
It's not allow to plug-in the type C connector to computer and plug-in the Type A connector to converter first then 2597 enclosure.

**Write-protect Switch**

Write Protection Switch Lock Security Flash Drive, prevent virus intrusion, data tampering and prevent to be deleted by mistaken

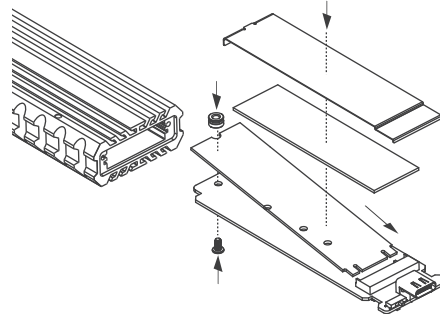
Hard Disk Drive Installation

1 Unscrew the 2 screws from the case.

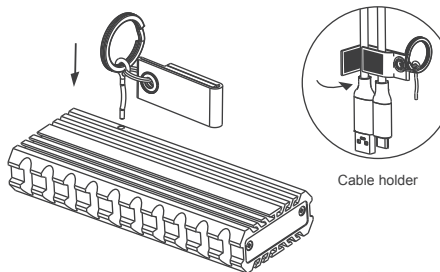


2 Pull out the PCB tray.

3 Place the thermal pad on the SSD, put the heat sink on the top, insert the SSD, and then fix with the screw.



4 Push back the PCB tray and lock with the screws, and insert the pull ring assembly. The installation is complete.



Cable holder

EMC259701IN-US